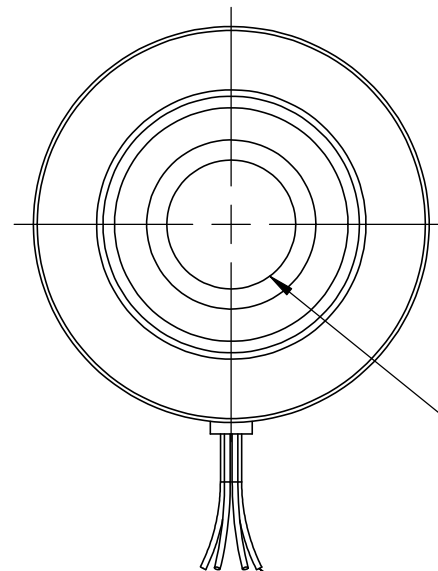
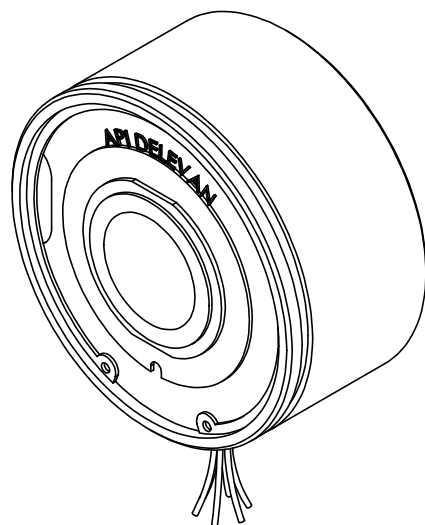


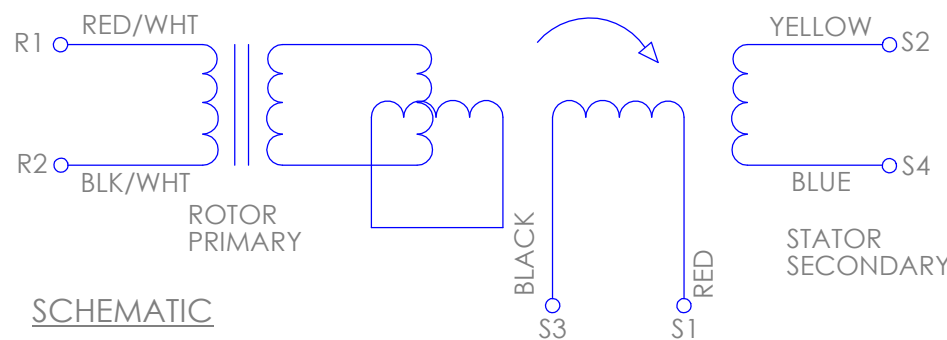
PILOT 700 SHOWN  
SEE SHEET TWO AND THREE  
FOR OTHER OPTIONS



- NOTES:
1. ROTOR & STATOR ARE A MATCHED PAIR. DO NOT INTERCHANGE ROTOR OR STATOR BETWEEN RESOLVERS.
  2. ROTOR AND HOUSING FACE TO BE MOUNTED FLUSH ± .005[.127].
  3. CUSTOMER MUST MAINTAIN SHAFT RUNOUT WITH RESPECT TO DATUM 'A' WITHIN .003[.076] T.I.R.



SHEMATIC



SHEMATIC

PHASING EQUATION

INCREASING ANGLE  
FOR CW ROTATION OF ROTOR  
FACING MOUNTING END.

$$E(S1-S3) = KE(R1-R2) \sin \theta$$

$$E(S2-S4) = -KE(R1-R2) \cos \theta$$

TECHNICAL INFORMATION		
HIPOT, LEADS TO CASE, 500VAC	Max. mArms	2
HIPOT, INTERPHASE, 250VAC	Max. mArms	2
TEMPERATURE RANGE	°C	-55 TO 155
WEIGHT	g	200
CONTINUOUS SPEED	Max. kRPM	20

**PART, ASSEMBLY AND ALL COMPONENTS  
MEET EU ROHS DIRECTIVE**

THIRD ANGLE PROJECTION

THE INFORMATION CONTAINED IN THIS DRAWING IS THE SOLE PROPERTY OF API DELEVAN. ANY REPRODUCTION IN PART OR WHOLE WITHOUT THE WRITTEN PERMISSION OF API DELEVAN IS PROHIBITED.

UNLESS OTHERWISE SPECIFIED:  
DIMENSIONS ARE IN INCHES [mm]  
DIAMETERS CONCENTRIC .003[.076] TIR  
FACES PERPENDICULAR -.003 [.076]  
INSIDE CORNERS R .015 [.381]MAX  
INTERPRETATION PER ASME  
Y14.5M-1994

UNLESS OTHERWISE SPECIFIED:  
REMOVE ALL BURRS AND BREAK  
SHARP EDGES -.005/.010[.127/.254]

TOLERANCES:  
DECIMAL .00±.01[.254] .000±.005[.127]  
ANGLE ±0.5°  
CHAMFER ANGLE ±10°

MACHINE SURFACES 63√

APPROVALS	DATE
DRAWN	-
CHECKED	-
DES ENG	-

**API DELEVAN**  
<http://www.delevan.com>

**21BRX**

SIZE	DWG. NO.
B	-
SCALE	SHEET 1 OF 3
C.CODE IDENT: 99800	

REVISIONS				
REV	ECO	DESCRIPTION	DATE	CHECKED
-	-	NEW DRAWING		

# NUMBERING

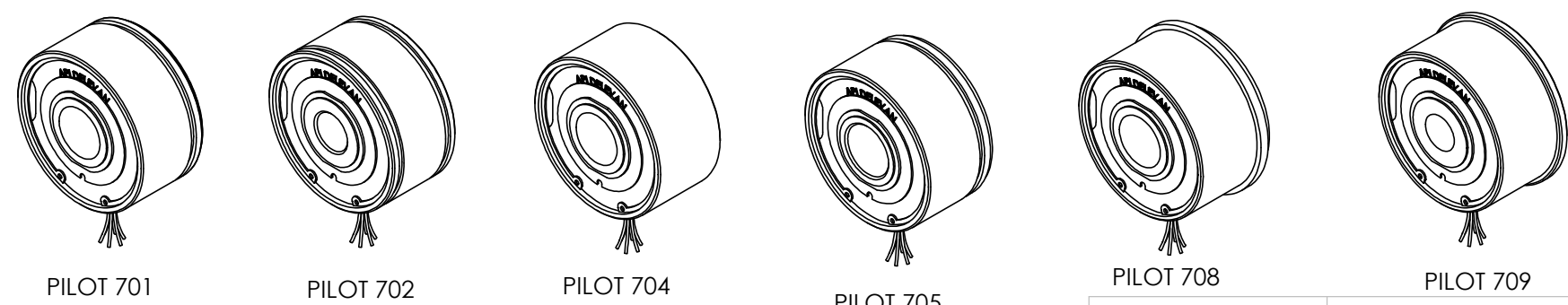
## 21BRX-XXX-XXXXX-XXXX

PLEASE CONTACT FACTORY FOR OTHER ELECTRICAL AND MECHANICAL OPTIONS.

SIZE  
21

STYLE OF RESOLVER:  
FRAMELESS, NEW GEN

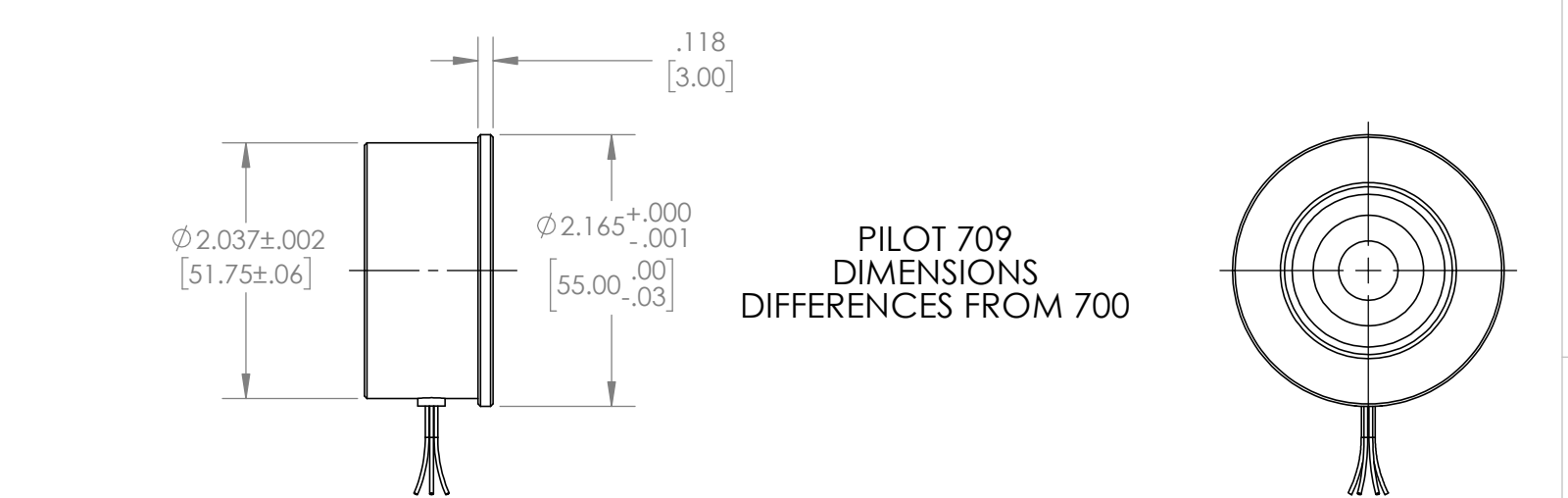
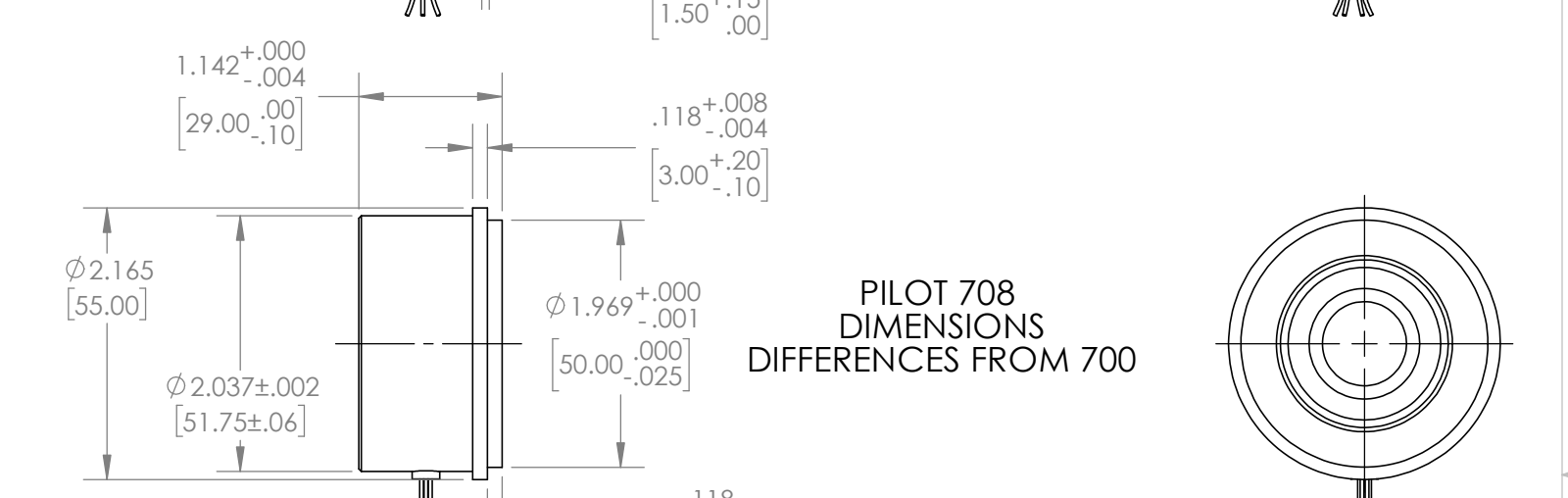
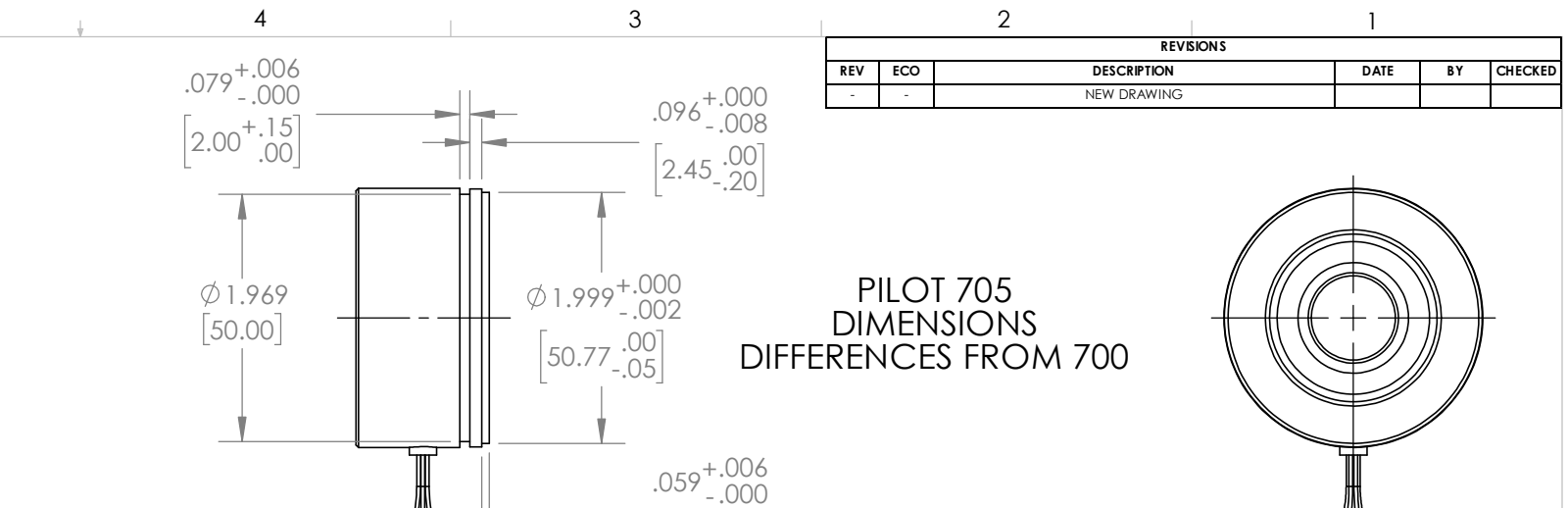
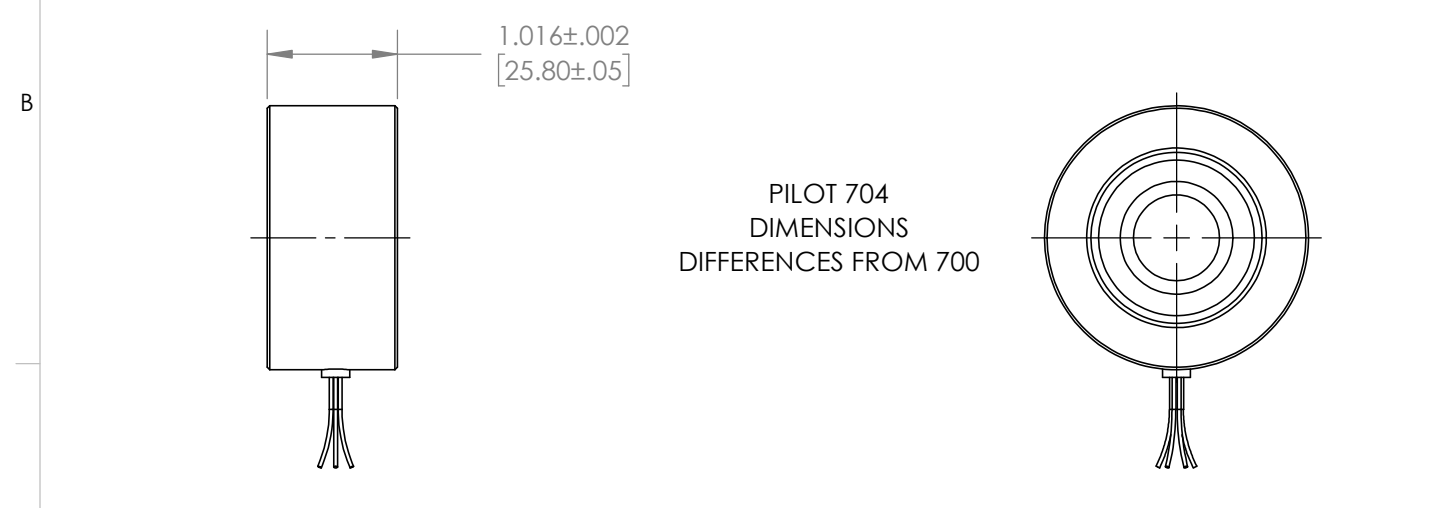
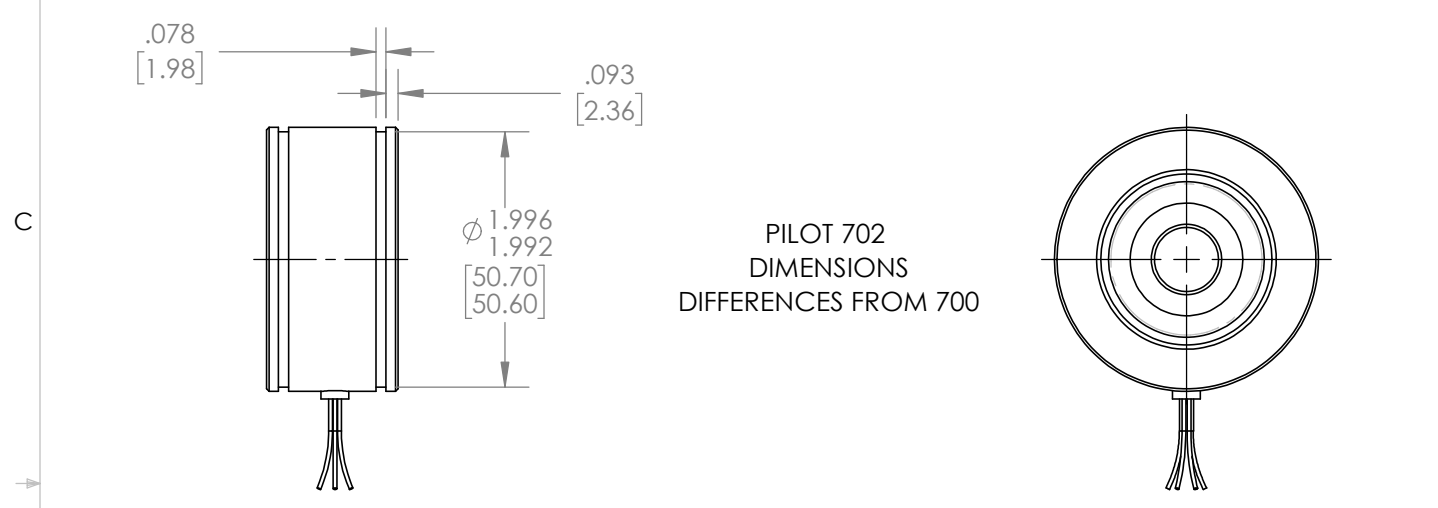
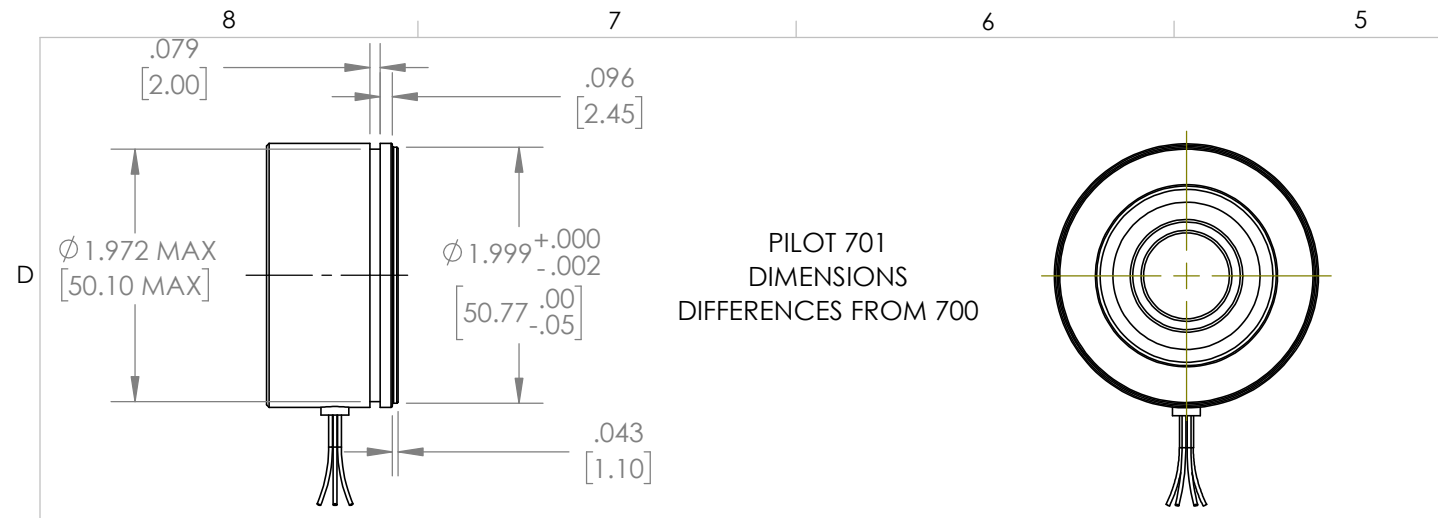
PILOT NUMBER	STYLE	WINDING NUMBER	Vrms	KHz	m Arms	Tr	SPEED	ACCURACY ±arcmin	BORE LETTER	BORE	"B" DIAMETER	CABLE DESIGNATION	CABLE	LEAD	LENGTH
700	SINGLE GROOVE, Ø2.06[52.32] 1.02 [25.9] AOL RADIAL LEADS	002	2	10	46	1	1	18 SPREAD	L	17mm	.670/.671 [17.02/17.04] 1.49[37.85] AOL	02	28 AWG FLYING LEADS	01	12[305]
		003	6	7.5	25	.33	1	12	DP	19mm	Ø.748/.749 [19.00/19.02] 1.057[26.85]AOL	05	26 AWG FLTING LEADS	02	15 [381]
		004	8	8	46	.50	1	18 SPREAD	V	20mm	Ø.7892/.7901 [20.46/20.69] 1.025[26.03] AOL	06	28 AWG 3 TWISTED PAIRS W/DRAIN	03	24[609]
701	SINGLE GROOVE, Ø1.999[50.77] 1.025 [26.06] AOL RADIAL LEADS	005	6	6	28	.31	1	24 SPREAD	AT	1/2	Ø.501/.502 [12.72/12.7] 1.025[26.03] AOL	11	22 AWG 4 TWISTED/SHIELDED PAIRS	04	60[1524]
		006	4	5	27	.50	1	20 SPREAD	F	16mm	Ø.6300/.6307 [16.00/16.02] 1.025[26.03] AOL	19	29 AWG SILIFLEX FLYING LEADS	05	80[2032]
		008	4	4	55	.45	1	20 SPREAD	CM	15mm	Ø.5902/.5913 [14.99/15.02] 1.025[26.03] AOL			06	120[3048]
	009	7	10	40	.50	1	20 SPREAD								



SEE SHEET 3 FOR DIMENSIONAL DIFFERENCES

 THIRD ANGLE PROJECTION	UNLESS OTHERWISE SPECIFIED: DIMENSIONS ARE IN INCHES [mm] DIAMETERS CONCENTRIC .003 [.076] TIR FACES PERPENDICULAR .003 [.076] INSIDE CORNERS R .015 [.381] MAX INTERPRETATION PER ASME Y14.5M-1994	UNLESS OTHERWISE SPECIFIED: REMOVE ALL BURRS AND BREAK SHARP EDGES -.005/.010 TOLERANCES: DECIMAL .00±.01 [.254] .000 ±.005 [.127] ANGLE ±0.5° CHAMFER ANGLE ±10°	<h2 style="margin: 0;">API DELEVAN</h2> <p style="margin: 0; font-size: small;">http://www.delevan.com</p> <h1 style="margin: 10px 0 0 0;">21BRX</h1>	MACHINE SURFACES $\sqrt{63}$ APPROVALS DATE DRAWN - - CHECKED - - DES ENG - -	SIZE DWG. NO. B SCALE SHEET 2 OF 3 CODE IDENT: 58655
THE INFORMATION CONTAINED IN THIS DRAWING IS THE SOLE PROPERTY OF API DELEVAN. ANY REPRODUCTION IN PART OR WHOLE WITHOUT THE WRITTEN PERMISSION OF API DELEVAN IS PROHIBITED.					

REVISIONS				
REV	ECO	DESCRIPTION	DATE	CHECKED
-	-	NEW DRAWING		



SOME DIMENSIONS MAY CHANGE TO ACCOMODATE CUSTOM CONFIGURATIONS

<p>THIRD ANGLE PROJECTION</p>	<p>UNLESS OTHERWISE SPECIFIED: DIMENSIONS ARE IN INCHES [mm] DIAMETERS CONCENTRIC .003 [.076] TIR FACES PERPENDICULAR .003 [.076] INSIDE CORNERS R .015 [.381] MAX</p> <p>INTERPRETATION PER ASME Y14.5M-1994</p>	<p>UNLESS OTHERWISE SPECIFIED: REMOVE ALL BURRS AND BREAK SHARP EDGES -.005/.010</p> <p>TOLERANCES: DECIMAL .00±.01 [.254] .000 ±.005 [.127] ANGLE ±0.5° CHAMFER ANGLE ±10°</p> <p>MACHINE SURFACES <math>\sqrt{63}</math></p>	<p><b>API DELEVAN</b> <a href="http://www.delevan.com">http://www.delevan.com</a></p> <p><b>15BRX</b></p>
	<p>MATERIAL</p> <p>FINISH</p>	<p>APPROVALS</p> <p>DRAWN</p> <p>CHECKED</p> <p>DES ENG</p>	<p>DATE</p> <p>DATE</p>

THE INFORMATION CONTAINED IN THIS DRAWING IS THE SOLE PROPERTY OF API DELEVAN. ANY REPRODUCTION IN PART OR WHOLE WITHOUT THE WRITTEN PERMISSION OF API DELEVAN IS PROHIBITED.