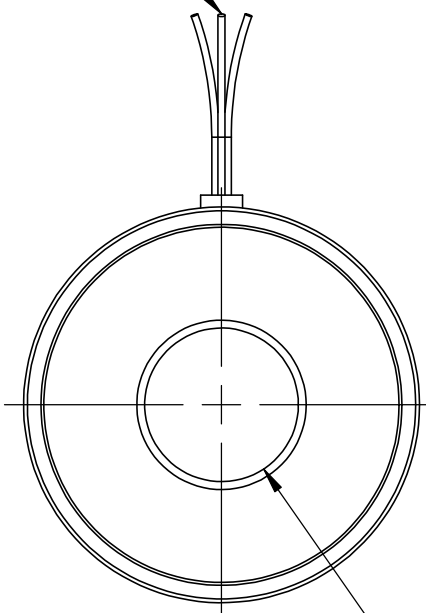


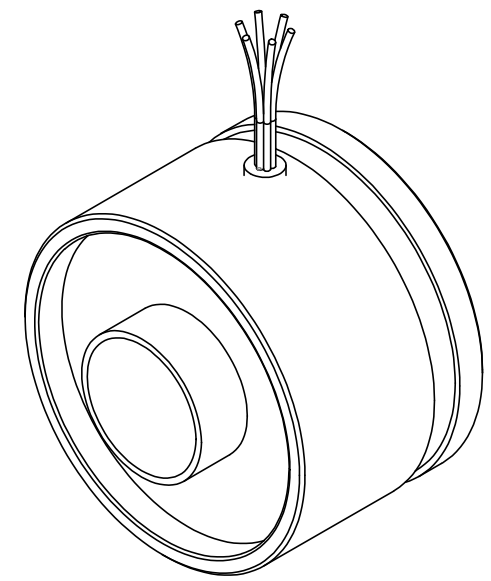
SEE SHEET TWO FOR LEAD OPTIONS

PILOT 600 SHOWN SEE SHEET TWO AND THREE FOR OTHER OPTIONS

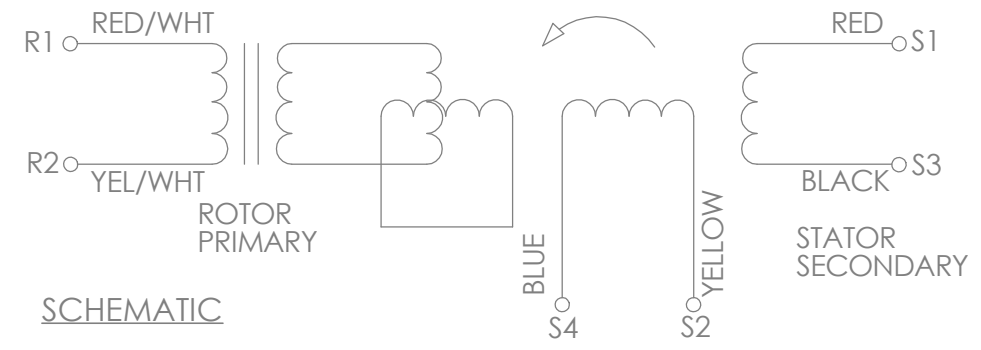


NOTES:

1. ROTOR & STATOR ARE A MATCHED PAIR. DO NOT INTERCHANGE ROTOR OR STATOR BETWEEN RESOLVERS.
2. ROTOR AND STATOR TO BE AXIALLY ALIGNED TO DATUM "B" ± .015.
3. CUSTOMER MUST MAINTAIN SHAFT RUNOUT WITH RESPECT TO DATUM 'A' WITHIN .003 T.I.R.



SCHEMATIC



SCHEMATIC

PHASING EQUATION FOR CCW ROTATION OF ROTOR FACING TRANSFORMER MOUNTING FLANGE END.

$$E(S1-S3) = KE(R1-R2) \cos \theta$$

$$E(S2-S4) = -KE(R1-R2) \sin \theta$$

**PART, ASSEMBLY AND ALL COMPONENTS MEET EU ROHS DIRECTIVE**

TECHNICAL INFORMATION		
HIPOT, LEADS TO CASE, 500VAC	Max. mAmps	2
HIPOT, INTERPHASE, 250VAC	Max. mAmps	2
TEMPERATURE RANGE	°C	-55 TO + 155
WEIGHT, APPROX	OZ	11

THIRD ANGLE PROJECTION

THE INFORMATION CONTAINED IN THIS DRAWING IS THE SOLE PROPERTY OF API DELEVAN. ANY REPRODUCTION IN PART OR WHOLE WITHOUT THE WRITTEN PERMISSION OF API DELEVAN IS PROHIBITED.

UNLESS OTHERWISE SPECIFIED: DIMENSIONS ARE IN INCHES [mm] DIAMETERS CONCENTRIC .003 [.076] TIR FACES PERPENDICULAR .003 [.076] INSIDE CORNERS R .015 [.381] MAX INTERPRETATION PER ASME Y14.5M-1994

UNLESS OTHERWISE SPECIFIED: REMOVE ALL BURRS AND BREAK SHARP EDGES -.005/.010[.127/.254]

TOLERANCES: DECIMAL .00±.01 [.254] .000 ±.005 [.127] ANGLE ±0.5° CHAMFER ANGLE ±10°

MACHINE SURFACES 63

APPROVALS	DATE
DRAWN	-
CHECKED	-
DES ENG	-

**API DELEVAN**  
<http://www.delevan.com>

**21BRCX**

SIZE B DWG. NO.

SCALE SHEET 1 OF 3 CODE IDENT: 99800

REVISIONS				
REV	ECO	DESCRIPTION	DATE	CHECKED
-	-	NEW DRAWING		

# NUMBERING

## 21BRCX-XXX-XXXX-XXXX

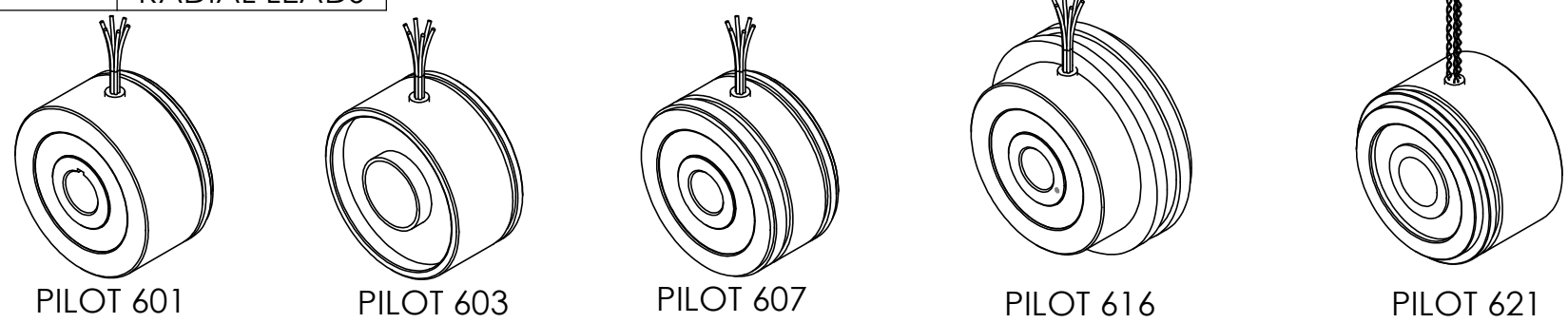
PLEASE CONTACT FACTORY FOR OTHER ELECTRICAL AND MECHANICAL OPTIONS.

SIZE 21

STYLE OF RESOLVER:  
FRAMELESS

PILOT NUMBER	STYLE	WINDING NUMBER	Vrms	KHz	ma rms	Tr	SPEED	ACCURACY $\pm$ arcmin	BORE LETTER	BORE	"B" DIAMETER	CABLE DESIGNATION	CABLE	LEAD	LENGTH
600	SINGLE GROOVE, 1.35[34.3] AOL $\varnothing$ 2.061 [52.35] RADIAL LEADS	002	7	10	31	.50	1	20 SPREAD	DP	.748	.748/.749 [19.0/19.02], 1.06 [26.92] AOL	02	28 AWG FLYING LEADS	01	12[305]
		004	4	5	27	.50	2	5	M	.800	.8000/.8007 [20.32/20.34] 1.35-1.50 [34.29/38.1] AOL	05	26 AWG FLYING LEADS	02	16[406]
		098	7	4	58	1	2	10	AJ	500	.5005/.5012 [12.71/12.73] 1.35-1.5 [34.29/38.1] AOL	06	28 AWG 3 TWISTED PAIRS W/DRAIN	03	24[609]
601	SINGLE GROOVE, 1.06[26.92] AOL $\varnothing$ 1.997 [50.72] RADIAL LEADS	008	4	5	25	.50	1	10	AQ	678	.6670/.6677 [16.94/16.96] 1.35-1.77 [34.29/44.96] AOL	07	24 AWG FLYING LEADS W/SHIELDING	04	60[1524]
		193	7	5	77	.50	1	7	AS	.500	.5005/.5012 [12.71/12.73] 1.06 [26.92] AOL W/KEYWAY	08	28AWG FLYING LEADS HIGH TEMP	05	80[2032]
		194	7	10	25	.47	1	10	AT	.500	.5005/.5012 [12.71/12.73] 1.06 [26.92] AOL	09	24 AWG 3 TWISTED PAIRS	06	120[3048]
603	SINGLE GROOVE, 1.35[34.3] AOL $\varnothing$ 2.061 [52.35] RADIAL LEADS	199	7	10	30	.05	1	10	BV	.500	.5000/.5010 [12.70/12.72] 1.2 [30.48] AOL	11	22 AWG 4 TWISTED PAIRS W/SHIELDING		
		200	2.21	10	12	.05	1	10	CH	.800	.8000/.8007 [20.32/20.34] 1.06 [26.92] AOL	12	24 AWG FLYING LEADS		
		009	4.25	7.5	55	.47	1	7	CM	.590	.5904/.5911 [14.99/15.01] 1.26 [32.00] AOL	19	29 AWG SILIFLEX FLYING LEADS		
607	DOUBLE GROOVES, 1.06[26.92] AOL $\varnothing$ 2.061 [52.35] AOL RADIAL LEADS	217	6	7.5	55	.28	1	15	CU	.750	.7500/.7510 [19.05/19.07] 1.06 [26.92] AOL	20	RADIATION HARDEN 26 AWG FLYING LEADS		
		011	4.25	7.5	55	.47	3	2	CW	.650	.6505/.6515 [16.52/16.55] W/KEYWAY 1.06 [26.92] AOL				
		269	7	10	13.5	.5	3	5							
616	SINGLE GROOVE, FLANGED, 1.22[30.10] AOL $\varnothing$ 2.36 [59.94] RADIAL LEADS	012	8	2.6	10	1	1	10							
		433	7.5	4	23	1	4	10							
621	SINGLE GROOVE, 1.26[30.00] AOL $\varnothing$ 1.85 [46.99] RADIAL LEADS														

SEE SHEET 3 FOR DIMENSIONAL DIFFERENCES



THIRD ANGLE PROJECTION

THE INFORMATION CONTAINED IN THIS DRAWING IS THE SOLE PROPERTY OF API DELEVAN. ANY REPRODUCTION IN PART OR WHOLE WITHOUT THE WRITTEN PERMISSION OF API DELEVAN IS PROHIBITED.

UNLESS OTHERWISE SPECIFIED:  
DIMENSIONS ARE IN INCHES [mm]  
DIAMETERS CONCENTRIC .003 [.076] TIR  
FACES PERPENDICULAR .003 [.076]  
INSIDE CORNERS R .015 [.381] MAX

INTERPRETATION PER ASME Y14.5M-1994

MATERIAL: -

FINISH: -

UNLESS OTHERWISE SPECIFIED:  
REMOVE ALL BURRS AND BREAK SHARP EDGES -.005/.010

TOLERANCES:  
DECIMAL .00 $\pm$ .01 [.254] .000  $\pm$ .005 [.127]  
ANGLE  $\pm$ 0.5°  
CHAMFER ANGLE  $\pm$ 10°

MACHINE SURFACES  $\sqrt{63}$

APPROVALS: DRAWN: - CHECKED: - DES ENG: -

DATE: -

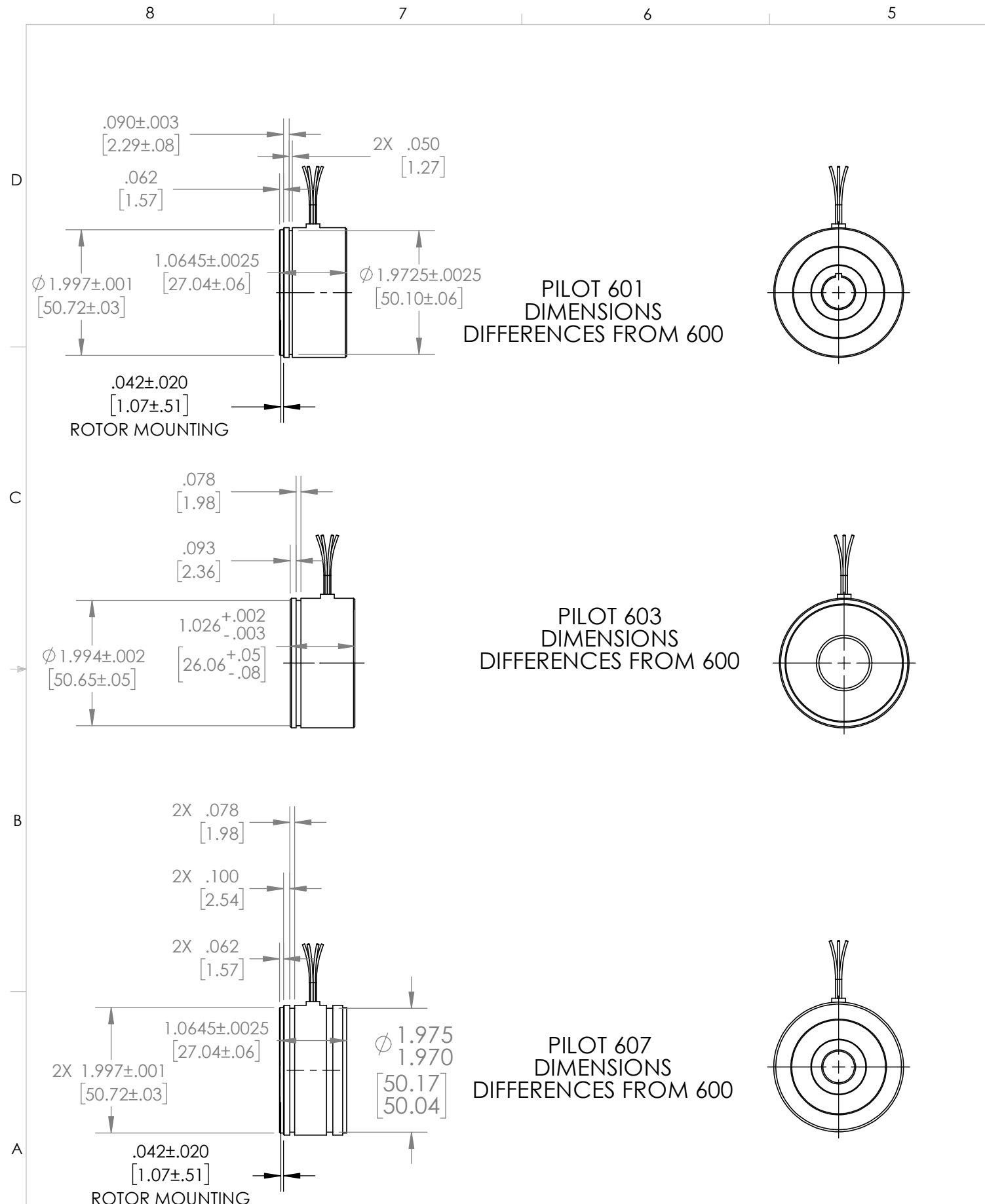
**API DELEVAN**  
<http://www.delevan.com>

**21BRCX**

SIZE B DWG. NO. -

SCALE: SHEET 2 OF 3 CODE IDENT: 58655

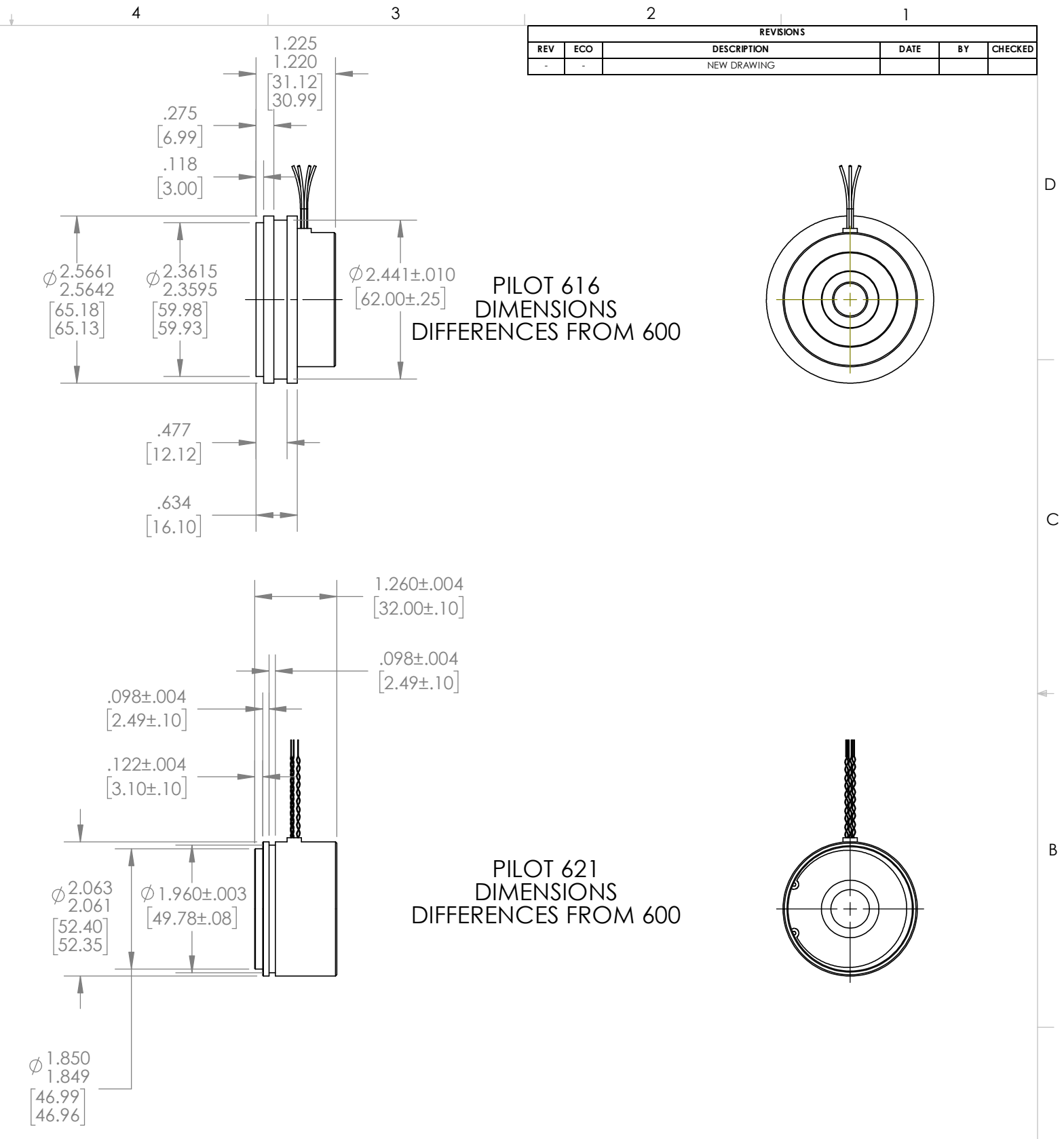
REVISIONS				
REV	ECO	DESCRIPTION	DATE	CHECKED
-	-	NEW DRAWING		



PILOT 601  
DIMENSIONS  
DIFFERENCES FROM 600

PILOT 603  
DIMENSIONS  
DIFFERENCES FROM 600

PILOT 607  
DIMENSIONS  
DIFFERENCES FROM 600



PILOT 616  
DIMENSIONS  
DIFFERENCES FROM 600

PILOT 621  
DIMENSIONS  
DIFFERENCES FROM 600

<p>THIRD ANGLE PROJECTION</p>	<p>UNLESS OTHERWISE SPECIFIED: DIMENSIONS ARE IN INCHES [mm] DIAMETERS CONCENTRIC .003 [0.076] TIR FACES PERPENDICULAR .003 [0.076] INSIDE CORNERS R .015 [0.381] MAX</p> <p>INTERPRETATION PER ASME Y14.5M-1994</p>	<p>UNLESS OTHERWISE SPECIFIED: REMOVE ALL BURRS AND BREAK SHARP EDGES - .005/.010</p> <p>TOLERANCES: DECIMAL .00±.01 [254] .000 ±.005 [127] ANGLE ±0.5° CHAMFER ANGLE ±10°</p>	<p><b>API DELEVAN</b> <a href="http://www.delevan.com">http://www.delevan.com</a></p>	
	<p>MATERIAL -</p> <p>FINISH -</p>	<p>MACHINE SURFACES 63</p> <p>APPROVALS - DATE -</p> <p>CHECKED -</p> <p>DES ENG -</p>	<p>SIZE DWG. NO. B</p>	<p>SCALE</p>

THE INFORMATION CONTAINED IN THIS DRAWING IS THE SOLE PROPERTY OF API DELEVAN. ANY REPRODUCTION IN PART OR WHOLE WITHOUT THE WRITTEN PERMISSION OF API DELEVAN IS PROHIBITED.

CODE IDENT: 58655